

What are you
waiting for?

JOIN TODAY!



313 S. BUFFALO STREET, STE A
WARSAW, IN 46580

574•267•6311
OR
800•776•6311

FAX: 574•267•7762

MDOBSON@WKCHAMBER.COM

W K C H A M B E R . C O M

FIND US ON FACEBOOK
FOLLOW US ON TWITTER @WKCHAMBER



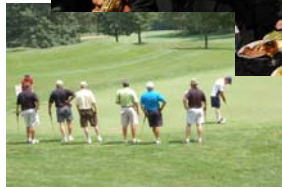
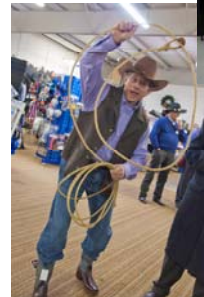
Connecting Business with Opportunity!



MEMBERSHIP APPLICATION

We are

THE VOICE OF BUSINESS
in Kosciusko County!



ADVANTAGES OF MEMBERSHIP

Becoming a member of the Warsaw/Kosciusko County Chamber of Commerce is a business investment. Chamber membership can open opportunities to meet new people. People do business with those they know and network with. Increase your business prospects through Chamber membership.

- Monthly newsletter with information and activities.
- Advertising opportunities in the monthly newsletter, the annual member directory, website, and other Chamber publications.
- Information about Chamber members upon request.
- Information about local, state, and federal legislative and business issues.
- Business statistical information.
- Your business listed at least twice in the annual business directory.
- Your business and web address posted on the Chamber website.
- Information/relocation packets for new residents.
- Seminars, workshops, and activities to help improve business competitiveness.
- Export documentation service provided free of charge.
- Opportunity to display your business's brochure in Chamber lobby.
- Ribbon cuttings, grand openings, and other business recognition.
- Kosciusko County Maps.
- Annual awards and recognition of businesses and individuals that have made significant contribution to the county's economy and lifestyle.
- Opportunity to serve with other business persons on several Chamber committees working on issues of concern to local business.
- Fun events with fellow members, such as Business After Hours, Taste & Trade Expo, Annual Golf Outing, and other events.
- Discount on business and health insurance, office supplies, online communications, and temporary employment services.
- Spanish translations
- Affinity programs,
- Free listing on MyChamberApp.com.
- Networking, networking — networking — **AND MUCH MORE!**



Warsaw/Kosciusko County Chamber of Commerce Membership Application Form

(please print or type)

Firm Name _____

Location Address _____
 _____ City _____ State _____ Zip _____

Billing Address _____
 _____ City _____ State _____ Zip _____

Phone _____ **Fax** _____

Toll Free Number _____

Applicant E-Mail _____ **Website** _____

Billing Contact (Directory Listing, Chamber Newsletters, Etc.) _____

Signature of Applicant _____

Date of Application _____ **Sponsored By** _____

This application is for Chamber membership participation beginning _____ with an annual investment of \$_____ for _____ (number of employees). I wish to be on the annual billing cycle of January ____ or July ____.

Please describe your main business operation (include products/service, etc.)

Using the listing enclosed, please indicate the sub-categories under which you want your business listed in the annual Chamber Membership Directory/Buyers Guide. The first two categories are included with your membership investment. Additional listing(s) may be added for a fee of \$50.00 per classification.

1. _____ 2. _____

3. _____ 4. _____

What's Important To You?

We want to know why you're joining the Chamber. It will help us assist you in taking advantage of the benefits and services to which you, as a member, are now entitled. Please indicate by checking the box(es) next to the benefits and services that are of primary interest to you.

- | | |
|---|--|
| <input type="checkbox"/> Networking/Business Contacts (Chamber Member Meetings, Business After Hours, Annual Banquet) | <input type="checkbox"/> Professional Development (Seminars and Workshops) |
| <input type="checkbox"/> Advertising/Business Promotion (Newsletter, Business Expo, Membership Directory) | <input type="checkbox"/> Business & Education Partnerships (Education Summits, Career Fairs) |
| <input type="checkbox"/> Business Support Programs (Mailing Labels & Lists, Resource Information) | <input type="checkbox"/> Governmental Affairs Programs |
| <input type="checkbox"/> Other _____ | |

This application, accompanied with your investment check, will be presented before the Board at the next meeting for approval. After the meeting you will be supplied with your membership information.

Cut here and return application to the Chamber of Commerce

MEMBERSHIP INVESTMENT

Classifications Of Investment Dues

<i>Categories</i>	<i>Warsaw, Winona Lake, Leesburg, & outside of Kosc. County</i>
Seasonal	\$115
Family	\$135
Not For Profit Class 1	\$135
1 - 5 FTE	\$250
6 - 15 FTE	\$345
16 - 30 FTE	\$475
31 - 60 FTE	\$690
61 - 90 FTE	\$955
91 - 150 FTE	\$1,210
151 - 250 FTE	\$1,820
251 - 500 FTE	\$2,410

FTE: Full Time Employee (Two part-time employees equal one full-time employee)

Discounts are offered to other communities in the counties, with additional discounts for paid membership in another Chamber of Commerce within Kosciusko County.

Call the Chamber for membership costs for over 500 employees.

Special Membership Categories

Family business — any retail business that employs not more than two family members, plus no more than one full-time or two part-time employees.

Seasonal Business — any family owned business opened no more than eight months a year.

Non-Profit Classification I — small not-for-profit organizations that are community-based.

Non-Profit Classification II — not-for-profit organizations with a substantial budget and a sophisticated system of organization. Investment dues will be one level lower than their actual number of employees.

HOW THE CHAMBER WORKS

Get Involved — Volunteer!

The Warsaw Kosciusko County Chamber of Commerce has long been the lead business organization for the Kosciusko County area. As the “voice for business” the Chamber has been instrumental in enhancing the business environment and the quality of life for all who live, work or visit our area.

The Chamber is led by a group of talented business members who know the pulse of the business community and who are committed to representing and exceeding the needs of our members. Our mission is to be an advocate of business in stimulating economic growth and diversity, promoting educational excellence and coordinating action on issues of community importance.

There are a number of opportunities for members to become involved with the Chamber by participating on one of the following committees or task forces.

- **Ambassadors committee**
- **Annual Dinner Task Force**
- **Education Steering Committee**
- **Education Summit Task Force**
- **Golf Outing Task Force**
- **Government Issues Committee**
- **Health Care Committee**
- **Taste & Trade Expo Task Force**
- **Workforce Development Committee**
- **Young Adult Professionals (YAP)**

If you are interested in volunteering on one of these committees, please let us know.